

**Sant Longowal Institute of Engineering and Technology, Longowal, Distt. Sangrur  
(Deemed to be University) (Established by Govt. of India)**

**Notice Inviting Tender**

e-Tenders in two bid system i.e. technical bid & commercial bid for the work as mentioned below from the Firms/OEM/contractors for participating in this tender. The intending bidder should have the proof of experience of successfully completed similar works during the last 7 years ending last day of the month previously to one in which applications are invited.

The bidders should have completed at least three similar each costing not less than the amount equal to 40% or Two similar completed works, each costing not less than the amount equal to 60% or one similar completed work of costing not less than the amount equal to 80% of the estimated cost with Central Government Department/State Government Department/ Central Autonomous Body/Central Public Sector undertaking/reputed corporate/ Large private or Public educational Institutes/Hospitals/ Universities.

The intending bidder should have the following documents:

(i) Official and Residential address of the Tenderer on an affidavit duly attested by competent authority or any document containing photograph and Official & Residential address (ii) Valid license under the Contract Labour (Regulation & Abolition) Act.1970 (if applicable as per Labour laws) (iii) Proof of registration with EPFO & E.P.F. Account No. (iv) GST number (v) Proof of having carried out similar works as mentioned in para 1 above. (vi) Last three years income tax returns. (vii) Bidder must quote CE/BIS certified light fixtures to ensure quality parameters. Relevant certificate to be furnished alongwith bid (applicable for only light fixtures). (viii) Quoted products must be having local service centre (Northern India) for quick support. Intending bidder must furnish the supporting document for the same. (ix) All the quoted light fixtures must be RDM (Remote Device Management) enabled. RDM id to be mentioned by the bidder on the letter head with declaration alongwith bid. (x) Average Annual financial turnover during last three consecutive financial years ending 31.03.2020 shall be at least 100%, 200% & 300% of the estimated cost respectively duly certified by the audited annual accounts of each year.

Sr. No.	Name of Work	Estimate Amount (Rs.)	Earnest Money Deposit (Rs.)	Cost of Tender Documents in Rs. (Non-refundable)	Tender Processing Fees (Rs.)	Time Period (Days)	Schedule of Quantities for Financial Bid (Annexure)
1	Up-Gradation of focus light for the Main stage of Main Auditorium at SLIET Longowal	29,48,000/-	58,960/-	1000/-	3479/-	120 Days	B

The tender documents will be available online only on the Institute's e-tendering website ([www.tenderwizard.com/SLIET](http://www.tenderwizard.com/SLIET)) and should also be submitted **ONLINE** through e-tendering along with tender fee of Rs.1000/- (non-refundable) and Earnest Money Deposit in favour of Director, SLIET through e-payment (IPG (Direct debit) NEFT/ OTC and Internet banking only). The tender processing fee (Non Refundable) should be paid through e-payment (debit or credit cards and internet banking).

It is mandatory for the Bidders/ Contractors to get themselves registered with [www.tenderwizard.com/SLIET](http://www.tenderwizard.com/SLIET) & get User Id, password & Class-3 Digital signatures for participating in the e-Tendering process. **For more details the bidder/contractor may contact Helpdesk of M/s ITI Limited on 0172-5035985, 9257209340, 8054628821 or mobile number-8146699866 or e-mail [sliethelpdesk@gmail.com](mailto:sliethelpdesk@gmail.com)** can be contacted.

**Schedule of Tender**

Availability of Tenders online for Bidding		Last date of Submission for Online Bids	Date, time & venue of opening of Technical Bid	Date, time and venue of opening of Commercial bid
From	To			
10.02.2021 09:00 AM	24.02.2021 05:00 PM	24.02.2021 up to 05:00 PM	25.02.2021 at 11:00 AM in the Electrical Wing, ESS-II, Near Mechanical Block, SLIET, Longowal	03.03.2021 at 11:00 AM in the Electrical Wing, ESS-II, Near Mechanical Block, SLIET, Longowal

**Contractor' sig.**

**Eng. In-charge**

## Schedule of Quantities for Technical Bid

Sr. No.	Description of item	Unit	Qty	Specifications
1	<p>SITC of CE Certified 150W High Quality LED Parcan Light complete with, Lamp source 3200K CCT Colour temperature CRI &amp; TLCI Values above 95 DmX 512 dimming with 3 channel control Beam Angle of 9° / 25° / 45° Total Power Consumption of 165W High quality output replacing 1000W Halogen Par Flicker Free 100% for Tv &amp; Film Cameras 11.7KHz Refresh Rate, Linear Dimming 0 ~ 100% Fuse and Internal safety protections Strobe option Adjustable 1~25 times/Sec Variable Fixture provided with Yoke of Manual Adjustment 5 Pin XLR or 3 Pin XLR for DmX Black powder coated body. <b>Approved Makes: Leksa Lighting/ Aultra/ Kenson Solace</b></p>	Nos	5	
2	<p>180W CE Certified LED CCT tuneable Light complete with CCT Tuneable Lamp source Having CRI TLCI Values above 95 High precision steady color No heat, DmX 512 dimming with 2 Channel Beam Angle 15°/ 25° / 45° 0 ~ 100%, Powder coated Black finish housing Rigidly built pressure die-casted Aluminium body LED Easy view display Flicker Free for high FPS Smooth fade in and Fade out Data DmX through 3 / 5 Pin XLR's Total Power Consumption of 180W Sound Active Mode Control IP20 protection. Power In and Out Connections 65dB ~ 130dB Sound sensing capacity <b>Approved Makes: Leksa Lighting/ Aultra/ Kenson Solace</b></p>	Nos	2	
3	<p>SITC of 400W CE Certified LED Blinder Light 30 Degree complete with 3200K CCT 4x100W Chip On Board LED Lamp source DmX 512 dimming with 4 /8 Channel modes CRI &amp; TLCI Value &gt; 90 Strobe option Adjustable 1 ~ 25 times / Sec Variable Beam Angle 30 Degree Total Power Consumption of 420W 11.7KHz Refresh Rate In built preset's for effects Fuse and Internal safety protections Active Cooling with Low Noise Fan 5 Pin XLR or 3 Pin XLR for DmX High quality well designed inbuilt reflector Flicker Free 100% for Tv &amp; Film Cameras Black finish housing, IP20 protection Having Strobe option and smooth dimming illuminate Stage with uniform light intensity levels. Approved Makes: Leksa Lighting/ Aultra/ Kenson Solace</p>	Nos	6	

Contractor' sig.

Eng. In-charge

4	<p>SITC of 200W CE Certified LED Fresnel Light having 3200K colour temperature  High quality uniquely designed Fresnel Lens CRI, TLCI and R9 value above 96  LED COB Based Source  No Multiple Shadows – Single Source illumination Total Power Consumption of 210W  Linear dimming 0 ~ 100% Adjustment  Flicker Free for High FPS, Power AC90-260V, 50/60HZ  Working Temperature - +40° ~ -30°  Active Cooling with Low Noise Fan  DmX &amp; RDM Control options with latest technology Fixture provided with Yoke of Manual Adjustment  Manual and DMX control Option mode through 5pin/3pin xlr Black powder coated fabricated housing with normal yoke. <b>Approved Makes: Leksa Lighting/ Aultra/ Kenson Solace</b></p>	Nos	4	
5	<p>SITC of 18 x 10W CE Certified LED Par Light RGBW, Beam Angle 25° complete with  RGBW 10W Lamp source x 18 Pcs DmX 512 dimming with 8 Channel  High Bright Red, Green, Blue, White LED's Source Unlimited Color Mixing through DmX  0 ~ 100% Linear dimming  In built presets for different colors Strobe Mode 20 times/Sec  Data DmX through 3 / 5 Pin XLR's 65dB ~ 130dB Sound sensing capacity Power In and Out Connections  High precision colors, IP20 protection Powder coated Black finish housing  Having Sound Control &amp; Master Slave Auto Run Mode  Illuminate the Indoor stage with unlimited colour effects  Rigidly built pressure die-casted Aluminium body.  <b>Approved Makes: Leksa Lighting/ Aultra/ Kenson Solace</b></p>	Nos	8	
6	<p>SITC of 200W CE Certified High Quality LED PC Light complete with, COB Lamp source 3200K CCT Colour temperature  CRI &amp; TLCI Values above 95  DmX 512 dimming with 5 channel control Motorised Zoom Beam angle variable from 14 Degree to 45 Degree Total Power Consumption of 210W  High quality output replacing 1000W Halogen PC Light  Flicker Free 100% for Tv &amp; Film Cameras 11.7KHz Refresh Rate  Linear Dimming 0 ~ 100%  Fuse and Internal safety protections  Strobe option Adjustable 1~25 times/Sec Variable Fixture provided with Yoke of Manual Adjustment 5 Pin XLR or 3 Pin XLR for DmX  Black powder coated body.  <b>Approved Makes: Leksa Lighting/ Aultra/ Kenson Solace</b></p>	Nos	1	

Contractor' sig.

Eng. In-charge

7	<p>SITC of 300W CE Certified LED Wash Light CCT Tuneable option having 60 Degree or better beam spread  48 LED Emmitters having RGBL Source Seamless CCT Tuning from 3000K ~ 7000K  R,G,B + WW direct access through knobs for manual operation 10 Presets for CCT Selection  Asymmetric Reflector on LED's  Uniform Spread with RGBW LED control 14+ DmX Channel operation  Nuetrick Power loop in and Out Luxeon LED High Lumens per watt RGB Colour mixing and presets control  Barndoor arrangement for Light spill control 230V AC Input power along with Fuse protection No Noise 0 dB operation  <b>Approved Makes: Leksa Lighting/ Aultra/ Kenson Solace</b></p>	Nos	4	
8	<p>SITC of 100W CE Certified LED Fresnel Light having 3200K colour temperature  High quality uniquely designed Fresnel Lens CRI,TLCI and R9 value above 96  LED COB Based Source  No Multiple Shadows – Single Source illumination Total Power Consumption of 210W  Linear dimming 0 ~ 100% Adjustment  Flicker Free for High FPS, Power AC90-260V, 50/60HZ  Working Temperature - +40° ~ -30°  Active Cooling with Low Noise Fan  DmX &amp; RDM Control options with latest technology Fixture provided with Yoke of Manual Adjustment  Manual and DMX control Option mode through 5pin/3pin xlr Black powder coated fabricated housing with normal yoke. <b>Approved Makes: Leksa Lighting/ Aultra/ Kenson Solace</b></p>	Nos	2	
9	<p>SITC of LED CE Certified Multi 20 Light having 3200K colour temperature  Beam Angle - 90°  Multi faceted reflected CRI,TLCI and R9 value above 96 LED COB Based Source  No Multiple Shadows – Single Source illumination Flicker Free for High FPS  Noiseless Operation  Total Power Consumption of 210W Linear dimming 0 ~ 100% Adjustment  Working Temperature - +40° ~ -30°  Active Cooling with Low Noise Fan  DmX &amp; RDM Control options with latest technology Fixture provided with Yoke of Manual Adjustment  Manual and DMX control Option mode through 5pin/3pin xlr Black powder coated fabricated housing with normal yoke. <b>Approved Makes: Leksa Lighting/ Aultra/ Kenson Solace</b></p>	Nos	4	

Contractor' sig.

Eng. In-charge

10	<p>SITC of 300W LED RGBAL 18° to 38° Zoom Profile Spot Light complete with, 3000K ~ 8000K Colour Temperature Rotary, Key, DMX control of dimmer Strobe option Adjustable 1 ~ 25 times / Sec RDM, DMX, Master-slave control mode 4 Kinds of dimming curves, Black finish housing Manual Focus with 4 Beam shaping cutters Efficient and well-designed Lamp reflector Intelligent temperature control Flicker free with selectable PWM Efficient Copper tube based Heat Sink for Heat Dissipation Sleek and Unique Designed Light weight body Fixture provided with Yoke of Manual Adjustment DmX 512 dimming with 1/4/6/10 DMX Channel Control modes IP20 protection, suitable to illuminate the key presenter or talent on stage. <b>Approved Makes: Leksa Lighting/ Aultra/ Kenson Solace</b></p>	Nos	1	
11	<p>SITC of Light fixture mounting clamp Customized for suspending on fixed bars on stage Made up of Aluminium Die casted MS threaded T bolt with yellow passivation finish Complete with black powder coating matt black finish. Safe working load 150 KG Suitable to Batten of size 30 OD to 60 OD <b>Approved Makes: Leksa Lighting/ Aultra/ Kenson Solace</b></p>	Nos	37	
12	<p>SITC of Light Fixture dual safety Chain made up of GI wire rope Bundled and twisted together Having load bearing capacity above 200 Kgs Sleeve on the rope. Carabiner Clip <b>Approved Makes: Leksa Lighting/ Aultra/ Kenson Solace</b></p>	Nos	37	
13	<p>SITC of Suspender cum clamps designed made out of MS material 150mm x 150mm x 5mm MS Base plate Threaded rod, Black powder coated finish Suitable to hold various type grid &amp; other rigging systems. <b>Approved Makes: Leksa Lighting/ Aultra/ Kenson Solace</b></p>	Nos	35	
14	<p>SITC of C Profile MS Hot rolled strips 3mm thick with Extra U bend used either to create basic supports Customized 40 x 50mm, Makes easier to suspend all the stage machinery Duly powder coated Matt black texture finish paint <b>Approved Makes: Leksa Lighting/ Aultra/ Kenson Solace</b></p>	Mtrs	40	
15	<p>SITC of 15 Mtr Length Motorized Light bar, Wifi operated wireless smart working functionailty Compact gear box along with suitable capacity of motor unit. Upper and lower limit controller, Wifi based up down lightbar movement Dual barrel duly powder coated Made using 40NB dual construction. Matt black texture finish paint to keep them rust free. Powder coated 60 microns black matt finish with proper chemical treatment and methodology. Specially designed compact gear box 3phase AC motor with DC Brake 1.5HP. Provided with Necessary pulley, guide pulleys, GI wire rope with winding drum. Safe working load of 200Kg. Cable management system. <b>Approved Makes: Leksa Lighting/ Aultra/ Kenson Solace</b></p>	Nos	1	

Contractor' sig.

Eng. In-charge

16	SITC of Fixed On stage Lighting Bar 18 Mtrs Length Straight as per the design Made out of 48mm Outer Dai, 40 Nominal Bore Mild Steel Pipe Dual Barrel Arrangement Dual Construction Powder coated with Matt black Texture Fixing Through Suspenders as per site conditions End Caps on the Pipe end Upper pipe of dual construction is used to anchor the bar lower pipe is effectively used to hang the light fixtures <b>Approved Makes: Leksa Lighting/ Aultra/ Kenson Solace</b>	Nos	1	
17	SITC of Fixed FOH Lighting Bar 18 Mtrs Length Straight as per the design Made out of 48mm Outer Dai, 40 Nominal Bore Mild Steel Pipe Dual Barrel Arrangement Dual Construction Powder coated with Matt black Texture Fixing Through Suspenders as per site conditions End Caps on the Pipe end Upper pipe of dual construction is used to anchor the bar lower pipe is effectively used to hang the light fixtures <b>Approved Makes: Leksa Lighting/ Aultra/ Kenson Solace</b>	Nos	1	
18	SITC of Flat Cable Wire harness required to provide the input power to the sockets on the hoists connecting between grid level circuit box to on hoist circuit box with below specifications: FRLS Multi core Copper cable 18 Cores of Power each with 2.5 Sq. mm copper wires insulated with high insulated material 2 DmX 5 core cables with low noise Width of the flat cable 120mm approx. Clips at each bending of the cable to act as retractor unit Long life, no breakage, smooth folding <b>Approved Makes: Belden/ Polycab/ LL</b>	Nos	1	
19	SITC of Power Distribution Electrical panel having a Incomer with distribution board, floor mount / rack mount / wall mount, Nuetral separation made using incomer of L&T or Schneider make, Individual MCB control for 25 outgoing circuits RYB Phase indicators internally wired using IS certified wires and cables, Provided with ivery connectors for the internal terminations and external outgoing connecting points Custom built as per specification and project requirement. <b>Approved Makes: Havells/ ABB/ LL/ L&amp;T</b>	Nos	1	
20	SITC of High quality power junction box 4 way made up of MS Sheet metal fabricated housing black powder coated, fibre glands of suitable size fitted with Powercon or IEC connector Box 10A. <b>Approved Makes: Havells/ ABB/ LL/ Anchor/ Richbay</b>	Nos	25	
21	SITC of High quality Dimming In junction box 1 way made up of MS Sheet metal fabricated housing black powder coated, fibre glands of suitable size fitted with 5 Pin DmX XLR Female socket <b>Approved Makes: Amphenol/ Nuetrick/ LL/ Liteputer</b>	Nos	1	
22	SITC of High quality Dimming Out junction box 1 way made up of MS Sheet metal fabricated housing black powder coated, fibre glands of suitable size fitted with 5 Pin DmX XLR Male socket. <b>Approved Makes: Amphenol/ Nuetrick/ LL/ Liteputer</b>	Nos	6	

Contractor' sig.

Eng. In-charge

23	SITC of Internal Earthing System with copper bare conductors all along the cable trays, metal parts and Installation Hardwares <b>Approved Makes: Custom</b>	Nos	1	
24	SITC of Black Powder coated cable trays made out of MS Sheet fabricated for a size of 150mm with perforation for heat dissipation provided with lid. <b>Approved Make: Custom</b>	Mtrs	20	
25	SITC of Black Powder coated cable trays made out of MS Sheet fabricated for a size of 75mm with perforation for heat dissipation provided with lid. <b>Approved Make: Custom</b>	Mtrs	65	
26	SITC of DmX Male Female Connectors 5 Pin having rubber sheeth protection for Cross connecting DmX wiring connections <b>Approved Makes: Amphenol/ Nuetrick/ LL/ Liteputer</b>	Nos	10	
27	SITC of DmX Male Termination Connector 5 Pin soldered with required capacity of resistor for signal deframing <b>Approved Makes: Amphenol/ Nuetrick/ LL/ Liteputer</b>	Nos	8	
28	SITC of DmX Loop Junction Box having 1 No. of DmX 5 Pin XLR Female Socket & 1 No. DmX XLR Male Socket fitted on to a sheet metal fabricated compact Junction box powder coated with matt black texture finish paint. <b>Approved Makes: Amphenol/ Nuetrick/ LL/ Liteputer</b>	Nos	1	
29	SITC of Digital Lighting Console with 1024 DMX channels, 1024 Channels. 10 Programmable Executors Master Fader, Keypad entry, LCD Display, Encoder Wheels Time control of scenes: Fade in/out, LTP slope Channels for each fixture 40 primary + 40 fine tune Switchable Page Scenes/Playbacks 10 Scenes to run simultaneoulsy 600 Scene step Shape generators: Shapes of Dimmer, Pan/Tilt, RGB, CMY, Color, Gobo, Iris and Focus, Master slider - Global, playback, fixture USB Memory - FAT32 supported <b>Make: Aultra/ ADB/ Leksa Lighting/ Zero88</b>	Nos	1	
30	SITC of Opto isolated RDM enabled DmX splitter unit provided with, 8 Isolated outputs Slow blow safety fuse 5 Pin XLR for output interface Dual mode to select 2 universe operation DmX Input through 5 Pin XLR Connector Powder coated compartment finish Mounting brackets for grid mount. <b>Make: Aultra/ ADB/ Leksa Lighting/ Zero88</b>	Nos	1	
31	SITC of Wireless DmX Trans Receivers to send the signals from controller to lights. <b>Makes: Lumen Radio/ Leksa Lighting/ W DmX</b>	Nos	1	

Contractor' sig.

Eng. In-charge

32	SITC of Motor Control Panel, with WIFI app base control, cum remote control 1 Way providing power input for motors internally neatly wired with contactors having individual motor control with required Push button, Emergency trip, RYB indicators, Supply Indicator and necessary meters. Wifi operated wireless smart working functionality for the motorised lightbars should be there with one neutral & phase connection slots and with 2 virtual load terminals. For each motor unit one each switch units should be installed inside the control panels which can be controlled with our mobiles, touch pads only with the internet connection. These device should configure with the wifi routers for getting internet access through wireless. Motor control panel duly powder coated with ash grey paint texture <b>Approved Makes: Havells/ ABB/ LL/ L&amp;T</b>	Nos	1	
33	SITC of Cable Connecting Circuit Boxes for the termination of cables from Electrical panel to the grid level point made out of MS Sheet metal fabricated housing duly powder coated with matt black texture finish paint, fitted with required channels and ivory connectors, necessary glands etc. <b>Approved Makes: Custom</b>	Nos	1	
34	SITC of 25-way Power Marhalling Box made up of MS Sheet metal fabricated housing black powder coated and ivory connectors for the internal terminations and external outgoing connecting points, fibre / brass glands of suitable size. <b>Approved Makes: Custom</b>	Lot	1	
35	SITC of Auxiliary Marhalling Box, made up of MS Sheet metal fabricated housing black powder coated and ivory connectors for the internal terminations and external outgoing connecting points, fibre glands of suitable size. <b>Make: Custom</b>	Lot	1	
36	SITC of MS sheet metal fabricated power junction box duly powder coated and fitted with 2 10amps 3 pin IEC socket, ON/OFF switch and necessary glands to power splitters and console, duly powder coated with Matt black texture finish. <b>Approved Makes: Havells/ ABB/ LL/ Anchor/ Richbay</b>	Nos	1	
37	SITC of FRLS Copper unarmoured Flexible cable having 3 Core each of 1.5 Sq mm size. <b>Make: Polycab / Walna / SBEE</b>	Mtrs	970	
38	SITC of FRLS Copper unarmoured Flexible cable having 7 Core each of 1.5 Sq mm size. <b>Make: Polycab / Walna / SBEE</b>	Mtrs	30	
39	SITC of FRLS Copper unarmoured Flexible cable having 4 Core each of 4 Sq mm size. <b>Make: Polycab / Walna / SBEE</b>	Mtrs	10	
40	SITC of 5 Core DmX Cable with Sheathed housing on the cable, well designed insulation, low noise suitable to transmit DmX signal. <b>Make: Falcon / Belden / LL</b>	Mtrs	120	

Contractor' sig.

Eng. In-charge



## Schedule of Quantities for Financial Bid

Sr. No.	Description of item	Unit	Qty	Rate (Rs.)	Amount (Rs.)
1	<p>SITC of CE Certified 150W High Quality LED Parcan Light complete with, Lamp source 3200K CCT Colour temperature CRI &amp; TLCI Values above 95 DmX 512 dimming with 3 channel control Beam Angle of 9° / 25° / 45° Total Power Consumption of 165W High quality output replacing 1000W Halogen Par Flicker Free 100% for Tv &amp; Film Cameras 11.7KHz Refresh Rate, Linear Dimming 0 ~ 100% Fuse and Internal safety protections Strobe option Adjustable 1~25 times/Sec Variable Fixture provided with Yoke of Manual Adjustment 5 Pin XLR or 3 Pin XLR for DmX Black powder coated body. <b>Approved Makes: Leksa Lighting/ Aultra/ Kenson Solace</b></p>	Nos	5		
2	<p>180W CE Certified LED CCT tuneable Light complete with CCT Tuneable Lamp source Having CRI TLCI Values above 95 High precision steady color No heat, DmX 512 dimming with 2 Channel Beam Angle 15° / 25° / 45° 0 ~ 100%, Powder coated Black finish housing Rigidly built pressure die-casted Aluminium body LED Easy view display Flicker Free for high FPS Smooth fade in and Fade out Data DmX through 3 / 5 Pin XLR's Total Power Consumption of 180W Sound Active Mode Control IP20 protection. Power In and Out Connections 65dB ~ 130dB Sound sensing capacity <b>Approved Makes: Leksa Lighting/ Aultra/ Kenson Solace</b></p>	Nos	2		
3	<p>SITC of 400W CE Certified LED Blinder Light 30 Degree complete with 3200K CCT 4x100W Chip On Board LED Lamp source DmX 512 dimming with 4 / 8 Channel modes CRI &amp; TLCI Value &gt; 90 Strobe option Adjustable 1 ~ 25 times / Sec Variable Beam Angle 30 Degree Total Power Consumption of 420W 11.7KHz Refresh Rate In built preset's for effects Fuse and Internal safety protections Active Cooling with Low Noise Fan 5 Pin XLR or 3 Pin XLR for DmX High quality well designed inbuilt reflector Flicker Free 100% for Tv &amp; Film Cameras Black finish housing, IP20 protection Having Strobe option and smooth dimming illuminate Stage with uniform light intensity levels. <b>Approved Makes: Leksa Lighting/ Aultra/ Kenson Solace</b></p>	Nos	6		

Contractor' sig.

Eng. In-charge

4	<p>SITC of 200W CE Certified LED Fresnel Light having 3200K colour temperature  High quality uniquely designed Fresnel Lens CRI, TLCI and R9 value above 96  LED COB Based Source  No Multiple Shadows – Single Source illumination Total Power Consumption of 210W  Linear dimming 0 ~ 100% Adjustment  Flicker Free for High FPS, Power AC90-260V, 50/60HZ  Working Temperature - +40° ~ -30°  Active Cooling with Low Noise Fan  DmX &amp; RDM Control options with latest technology Fixture provided with Yoke of Manual Adjustment  Manual and DMX control Option mode through 5pin/3pin xlr Black powder coated fabricated housing with normal yoke. <b>Approved Makes: Leksa Lighting/ Aultra/ Kenson Solace</b></p>	Nos	4		
5	<p>SITC of 18 x 10W CE Certified LED Par Light RGBW, Beam Angle 25° complete with  RGBW 10W Lamp source x 18 Pcs DmX 512 dimming with 8 Channel  High Bright Red, Green, Blue, White LED's Source Unlimited Color Mixing through DmX  0 ~ 100% Linear dimming  In built presets for different colors Strobe Mode 20 times/Sec  Data DmX through 3 / 5 Pin XLR's 65dB ~ 130dB Sound sensing capacity Power In and Out Connections  High precision colors, IP20 protection Powder coated Black finish housing  Having Sound Control &amp; Master Slave Auto Run Mode  Illuminate the Indoor stage with unlimited colour effects  Rigidly built pressure die-casted Aluminium body.  <b>Approved Makes: Leksa Lighting/ Aultra/ Kenson Solace</b></p>	Nos	8		
6	<p>SITC of 200W CE Certified High Quality LED PC Light complete with, COB Lamp source 3200K CCT Colour temperature  CRI &amp; TLCI Values above 95  DmX 512 dimming with 5 channel control Motorised Zoom Beam angle variable from 14 Degree to 45 Degree Total Power Consumption of 210W  High quality output replacing 1000W Halogen PC Light  Flicker Free 100% for Tv &amp; Film Cameras 11.7KHz Refresh Rate  Linear Dimming 0 ~ 100%  Fuse and Internal safety protections  Strobe option Adjustable 1~25 times/Sec Variable Fixture provided with Yoke of Manual Adjustment 5 Pin XLR or 3 Pin XLR for DmX  Black powder coated body.  <b>Approved Makes: Leksa Lighting/ Aultra/ Kenson Solace</b></p>	Nos	1		

Contractor' sig.

Eng. In-charge

7	<p>SITC of 300W CE Certified LED Wash Light CCT Tuneable option having 60 Degree or better beam spread  48 LED Emmitters having RGBL Source Seamless CCT Tuning from 3000K ~ 7000K  R,G,B + WW direct access through knobs for manual operation 10 Presets for CCT Selection  Asymmetric Reflector on LED's  Uniform Spread with RGBW LED control 14+ DmX Channel operation  Nuetrick Power loop in and Out Luxeon LED High Lumens per watt RGB Colour mixing and presets control  Barndoor arrangement for Light spill control 230V AC Input power along with Fuse protection No Noise 0 dB operation  <b>Approved Makes: Leksa Lighting/ Aultra/ Kenson Solace</b></p>	Nos	4		
8	<p>SITC of 100W CE Certified LED Fresnel Light having 3200K colour temperature  High quality uniquely designed Fresnel Lens CRI,TLCI and R9 value above 96  LED COB Based Source  No Multiple Shadows – Single Source illumination Total Power Consumption of 210W  Linear dimming 0 ~ 100% Adjustment  Flicker Free for High FPS, Power AC90-260V, 50/60HZ  Working Temperature - +40° ~ -30°  Active Cooling with Low Noise Fan  DmX &amp; RDM Control options with latest technology Fixture provided with Yoke of Manual Adjustment  Manual and DMX control Option mode through 5pin/3pin xlr Black powder coated fabricated housing with normal yoke. <b>Approved Makes: Leksa Lighting/ Aultra/ Kenson Solace</b></p>	Nos	2		
9	<p>SITC of LED CE Certified Multi 20 Light having 3200K colour temperature  Beam Angle - 90°  Multi faceted reflected CRI,TLCI and R9 value above 96 LED COB Based Source  No Multiple Shadows – Single Source illumination Flicker Free for High FPS  Noiseless Operation  Total Power Consumption of 210W Linear dimming 0 ~ 100% Adjustment  Working Temperature - +40° ~ -30°  Active Cooling with Low Noise Fan  DmX &amp; RDM Control options with latest technology Fixture provided with Yoke of Manual Adjustment  Manual and DMX control Option mode through 5pin/3pin xlr Black powder coated fabricated housing with normal yoke. <b>Approved Makes: Leksa Lighting/ Aultra/ Kenson Solace</b></p>	Nos	4		

Contractor' sig.

Eng. In-charge

10	<p>SITC of 300W LED RGBAL 18° to 38° Zoom Profile Spot Light complete with, 3000K ~ 8000K Colour Temperature Rotary, Key, DMX control of dimmer</p> <p>Strobe option Adjustable 1 ~ 25 times / Sec RDM, DMX, Master-slave control mode</p> <p>4 Kinds of dimming curves, Black finish housing Manual Focus with 4 Beam shaping cutters Efficient and well-designed Lamp reflector Intelligent temperature control Flicker free with selectable PWM</p> <p>Efficient Copper tube based Heat Sink for Heat Dissipation Sleek and Unique Designed Light weight body</p> <p>Fixture provided with Yoke of Manual Adjustment DmX 512 dimming with 1/4/6/10 DMX Channel Control modes IP20 protection, suitable to illuminate the key presenter or talent on stage.</p> <p><b>Approved Makes: Leksa Lighting/ Aultra/ Kenson Solace</b></p>	Nos	1		
11	<p>SITC of Light fixture mouting clamp</p> <p>Customized for suspending on fixed bars on stage Made up of Aluminium Die casted</p> <p>MS threaded T bolt with yellow passivation finish Complete with black powder coating matt black finish. Safe working load 150 KG</p> <p>Suitable to Batten of size 30 OD to 60 OD</p> <p><b>Approved Makes: Leksa Lighting/ Aultra/ Kenson Solace</b></p>	Nos	37		
12	<p>SITC of Light Fixture dual safety Chain made up of GI wire rope Bundled and twisted together</p> <p>Having load bearing capacity above 200 Kgs Sleeve on the rope. Carabiner Clip</p> <p><b>Approved Makes: Leksa Lighting/ Aultra/ Kenson Solace</b></p>	Nos	37		
13	<p>SITC of Suspender cum clamps designed made out of MS material</p> <p>150mm x 150mm x 5mm MS Base plate Threaded rod, Black powder coated finish</p> <p>Suitable to hold various type grid &amp; other rigging systems.</p> <p><b>Approved Makes: Leksa Lighting/ Aultra/ Kenson Solace</b></p>	Nos	35		
14	<p>SITC of C Profile MS Hot rolled strips 3mm thick with Extra U bend used either to create basic supports Customized 40 x 50mm,</p> <p>Makes easier to suspend all the stage machinery Duly powder coated</p> <p>Matt black texture finish paint</p> <p><b>Approved Makes: Leksa Lighting/ Aultra/ Kenson Solace</b></p>	Mtrs	40		
15	<p>SITC of 15 Mtr Length Motorized Light bar,</p> <p>Wifi operated wireless smart working functionailty</p> <p>Compact gear box along with suitable capacity of motor unit. Upper and lower limit controller,</p> <p>Wifi based up down lightbar movement Dual barrel duly powder coated</p> <p>Made using 40NB dual construction.</p> <p>Matt black texture finish paint to keep them rust free.</p> <p>Powder coated 60 microns black matt finish with proper chemical treatment and methodology.</p> <p>Specially designed compact gear box 3phase AC motor with DC Brake 1.5HP.</p> <p>Provided with Necessary pulley, guide pulleys, GI wire rope with winding drum.</p> <p>Safe working load of 200Kg. Cable management system.</p> <p><b>Approved Makes: Leksa Lighting/ Aultra/ Kenson Solace</b></p>	Nos	1		

Contractor' sig.

Eng. In-charge

16	SITC of Fixed On stage Lighting Bar 18 Mtrs Length Straight as per the design Made out of 48mm Outer Dai, 40 Nominal Bore Mild Steel Pipe Dual Barrel Arrangement Dual Construction Powder coated with Matt black Texture Fixing Through Suspenders as per site conditions End Caps on the Pipe end Upper pipe of dual construction is used to anchor the bar lower pipe is effectively used to hang the light fixtures <b>Approved Makes: Leksa Lighting/ Aultra/ Kenson Solace</b>	Nos	1		
17	SITC of Fixed FOH Lighting Bar 18 Mtrs Length Straight as per the design Made out of 48mm Outer Dai, 40 Nominal Bore Mild Steel Pipe Dual Barrel Arrangement Dual Construction Powder coated with Matt black Texture Fixing Through Suspenders as per site conditions End Caps on the Pipe end Upper pipe of dual construction is used to anchor the bar lower pipe is effectively used to hang the light fixtures <b>Approved Makes: Leksa Lighting/ Aultra/ Kenson Solace</b>	Nos	1		
18	SITC of Flat Cable Wire harness required to provide the input power to the sockets on the hoists connecting between grid level circuit box to on hoist circuit box with below specifications: FRLS Multi core Copper cable 18 Cores of Power each with 2.5 Sq. mm copper wires insulated with high insulated material 2 DmX 5 core cables with low noise Width of the flat cable 120mm approx. Clips at each bending of the cable to act as retractor unit Long life, no breakage, smooth folding <b>Approved Makes: Belden/ Polycab/ LL</b>	Nos	1		
19	SITC of Power Distribution Electrical panel having a Incomer with distribution board, floor mount / rack mount / wall mount, Nuetral separation made using incomer of L&T or Schneider make, Individual MCB control for 25 outgoing circuits RYB Phase indicators internally wired using IS certified wires and cables, Provided with ivery connectors for the internal terminations and external outgoing connecting points Custom built as per specification and project requirement. <b>Approved Makes: Havells/ ABB/ LL/ L&amp;T</b>	Nos	1		
20	SITC of High quality power junction box 4 way made up of MS Sheet metal fabricated housing black powder coated, fibre glands of suitable size fitted with Powercon or IEC connector Box 10A. <b>Approved Makes: Havells/ ABB/ LL/ Anchor/ Richbay</b>	Nos	25		
21	SITC of High quality Dimming In junction box 1 way made up of MS Sheet metal fabricated housing black powder coated, fibre glands of suitable size fitted with 5 Pin DmX XLR Female socket <b>Approved Makes: Amphenol/ Nuetrick/ LL/ Liteputer</b>	Nos	1		
22	SITC of High quality Dimming Out junction box 1 way made up of MS Sheet metal fabricated housing black powder coated, fibre glands of suitable size fitted with 5 Pin DmX XLR Male socket. <b>Approved Makes: Amphenol/ Nuetrick/ LL/ Liteputer</b>	Nos	6		

Contractor' sig.

Eng. In-charge

23	SITC of Internal Earthing System with copper bare conductors all along the cable trays, metal parts and Installation Hardwares <b>Approved Makes: Custom</b>	Nos	1		
24	SITC of Black Powder coated cable trays made out of MS Sheet fabricated for a size of 150mm with perforation for heat dissipation provided with lid. <b>Approved Make: Custom</b>	Mtrs	20		
25	SITC of Black Powder coated cable trays made out of MS Sheet fabricated for a size of 75mm with perforation for heat dissipation provided with lid. <b>Approved Make: Custom</b>	Mtrs	65		
26	SITC of DmX Male Female Connectors 5 Pin having rubber sheeth protection for Cross connecting DmX wiring connections <b>Approved Makes: Amphenol/ Nuetrick/ LL/ Liteputer</b>	Nos	10		
27	SITC of DmX Male Termination Connector 5 Pin soldered with required capacity of resistor for signal deframing <b>Approved Makes: Amphenol/ Nuetrick/ LL/ Liteputer</b>	Nos	8		
28	SITC of DmX Loop Junction Box having 1 No. of DmX 5 Pin XLR Female Socket & 1 No. DmX XLR Male Socket fitted on to a sheet metal fabricated compact Junction box powder coated with matt black texture finish paint. <b>Approved Makes: Amphenol/ Nuetrick/ LL/ Liteputer</b>	Nos	1		
29	SITC of Digital Lighting Console with 1024 DMX channels, 1024 Channels. 10 Programmable Executors Master Fader, Keypad entry, LCD Display, Encoder Wheels Time control of scenes: Fade in/out, LTP slope Channels for each fixture 40 primary + 40 fine tune Switchable Page Scenes/Playbacks 10 Scenes to run simultaneoulsy 600 Scene step Shape generators: Shapes of Dimmer, Pan/Tilt, RGB, CMY, Color, Gobo, Iris and Focus, Master slider - Global, playback, fixture USB Memory - FAT32 supported <b>Make: Aultra/ ADB/ Leksa Lighting/ Zero88</b>	Nos	1		
30	SITC of Opto isolated RDM enabled DmX splitter unit provided with, 8 Isolated outputs Slow blow safety fuse 5 Pin XLR for output interface Dual mode to select 2 universe operation DmX Input through 5 Pin XLR Connector Powder coated compartment finish Mounting brackets for grid mount. <b>Make: Aultra/ ADB/ Leksa Lighting/ Zero88</b>	Nos	1		
31	SITC of Wireless DmX Trans Receivers to send the signals from controller to lights. <b>Makes: Lumen Radio/ Leksa Lighting/ W DmX</b>	Nos	1		

Contractor' sig.

Eng. In-charge

32	SITC of Motor Control Panel, with WIFI app base control, cum remote control 1 Way providing power input for motors internally neatly wired with contactors having individual motor control with required Push button, Emergency trip, RYB indicators, Supply Indicator and necessary meters. Wifi operated wireless smart working functionality for the motorised lightbars should be there with one neutral & phase connection slots and with 2 virtual load terminals. For each motor unit one each switch units should be installed inside the control panels which can be controlled with our mobiles, touch pads only with the internet connection. These device should configure with the wifi routers for getting internet access through wireless. Motor control panel duly powder coated with ash grey paint texture <b>Approved Makes: Havells/ ABB/ LL/ L&amp;T</b>	Nos	1		
33	SITC of Cable Connecting Circuit Boxes for the termination of cables from Electrical panel to the grid level point made out of MS Sheet metal fabricated housing duly powder coated with matt black texture finish paint, fitted with required channels and ivory connectors, necessary glands etc. <b>Approved Makes: Custom</b>	Nos	1		
34	SITC of 25-way Power Marhalling Box made up of MS Sheet metal fabricated housing black powder coated and ivory connectors for the internal terminations and external outgoing connecting points, fibre / brass glands of suitable size. <b>Approved Makes: Custom</b>	Lot	1		
35	SITC of Auxiliary Marhalling Box, made up of MS Sheet metal fabricated housing black powder coated and ivory connectors for the internal terminations and external outgoing connecting points, fibre glands of suitable size. <b>Make: Custom</b>	Lot	1		
36	SITC of MS sheet metal fabricated power junction box duly powder coated and fitted with 2 10amps 3 pin IEC socket, ON/OFF switch and necessary glands to power splitters and console, duly powder coated with Matt black texture finish. <b>Approved Makes: Havells/ ABB/ LL/ Anchor/ Richbay</b>	Nos	1		
37	SITC of FRLS Copper unarmoured Flexible cable having 3 Core each of 1.5 Sq mm size. <b>Make: Polycab / Walna / SBEE</b>	Mtrs	970		
38	SITC of FRLS Copper unarmoured Flexible cable having 7 Core each of 1.5 Sq mm size. <b>Make: Polycab / Walna / SBEE</b>	Mtrs	30		
39	SITC of FRLS Copper unarmoured Flexible cable having 4 Core each of 4 Sq mm size. <b>Make: Polycab / Walna / SBEE</b>	Mtrs	10		
40	SITC of 5 Core DmX Cable with Sheathed housing on the cable, well designed insulation, low noise suitable to transmit DmX signal. <b>Make: Falcon / Belden / LL</b>	Mtrs	120		

Contractor' sig.

Eng. In-charge

1. The Contractors should quote in figures as well as in word the rates and amount tendered by them. The amount for each item should be worked out the requisite totals given.
2. i) An item rate tender containing percentage below/above will be summarily rejected. However where a quotation voluntarily offers a rebate, this may be considered.  
ii) Quotations shall be strictly as per the condition of work, conditional quotations are liable to be rejected.
3. i) Special care should be taken to write the rate and amounts in figures as well as in words in such a way that interpolation is not possible. The total amount should be written before the figure of Rupees and word paisa should be written at the end (unless the rates in whole rupees) and followed by the word only. It should invariably be upto two decimal places. While quoting the rates in schedule of quantities, the word only should be written closely following the amount and it should not be written in the next line.  
ii) In case of any discrepancy between the rates quoted in figures and words that rate on which the amount has been worked out shall be taken as correct. In case of any discrepancy between the rate quoted and the amount worked out the rate quoted in figures and words shall be taken as correct.
4. The quotation for works shall remain open for acceptance for a period of ninety days from date of opening of tenders. If any contract withdraws his quotation before the said period or makes any modification in the terms and conditions of the quotation which are not acceptable to the Institute.
5. The acceptance of a tender will rest with the Director, SLIET who does not bind himself to accept the lowest quotation, and reserves to himself the authority to reject any or all of the quotations received without the assignment of any reason. All quotations in which any of the prescribed conditions are not fulfilled or are incomplete in any respect are liable to be rejected.
6. On acceptance of the quotation, the name of the accredited representative(s) of the contractor who would be responsible for taking instructions from the Engineer-in-charge shall be intimated to the undersigned.

**7. Security Deposit**

10% will be deducted from each RA bill of contractor as a security deposit subject to maximum 5% of the contract value. This will be released after satisfactory completion of defect liability period (which is one year from the date of completion of work) & completion of all contractual obligations, submission of relevant complete documents and NOC from Labour Commissioner.

In case contractor claims first & final bill, the bidder has to submit performance security @5% of contract value subject to minimum 5000/- in the form of BG/FD/DD favouring Director SLIET Longowal valid upto defect liability period. This will be release after satisfactory completion of defect liability period and completion of all contractual obligations on the submission of all relevant documents.

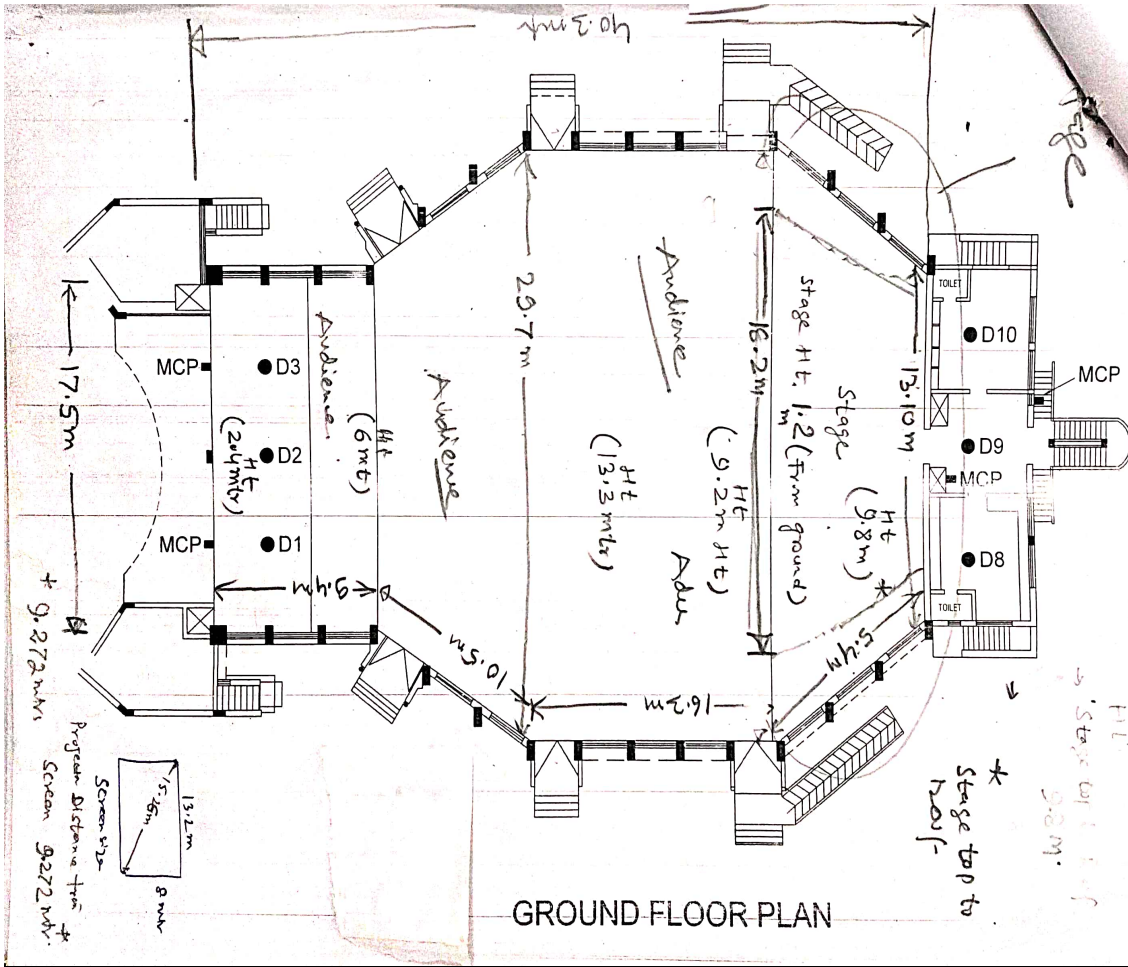
8. The EMD shall be refunded to the successful bidder beyond 60 days after the successful completion of work upto the entire satisfaction of Engineer In-Charge & on the submission of Performance Security/Security Deposit whichever is eariler.
9. The contractor shall also ensure compliance of the EPF & MP Act, 1952 by the Sub-contractor, if any engaged by the contractor for the said work and any sub-contractor engaged should also have Provident Fund Code.
10. Canvassing in connection with quotation is strictly prohibited and the quotation submitted by the contractors who resort to canvassing will be liable to rejection.
11. The Contractor shall not be permitted to quotation for work in the SLIET responsible for award and execution of contractors in which his near relative is posted as Accountant or as an Officer in any capacity between the grades of Faculty In-charge (Electrical) and Assistant Engineer (both inclusive). He shall also intimate the names of persons who are working with in any capacity or are subsequently employed by him and who are near relatives to any of the officers in the Institute. Any breach of this condition by the Contractor would render him liable to be removed from the approved list of contractors of this Institute.
12. GST or any other tax on material in respect of the contract shall be payable by the contractor and Institute will not entertain any claim whatsoever.
13. In case of non-availability of ESIC Scheme in the region, the same shall be covered under the Workman Compensation Act (WCA) or Group Insurance Scheme by the Contractor.
14. The payment will be made within 30 days after completion of work & on the submission of Tax invoice with GST no, RTGS/NEFT bank detail & other relevant documents (if any) subject to the fully satisfaction of the department about the quality of work.

**Contractor' sig.**

**Eng. In-charge**

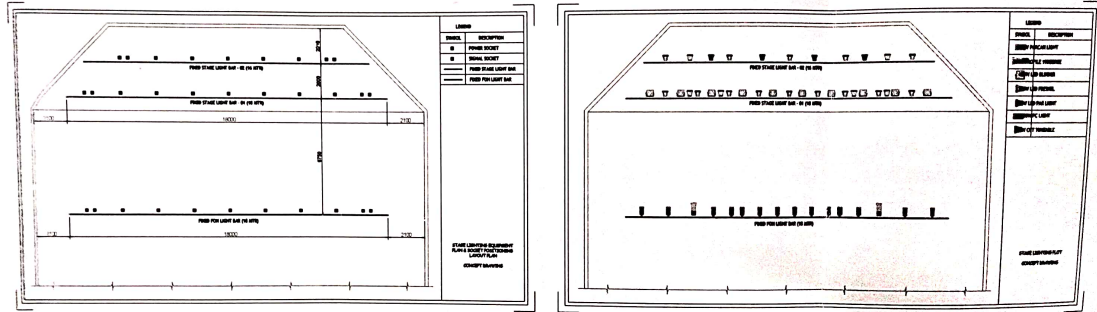


**Drawing**



Contractor' sig.

Eng. In-charge



Contractor' sig.

Eng. In-charge